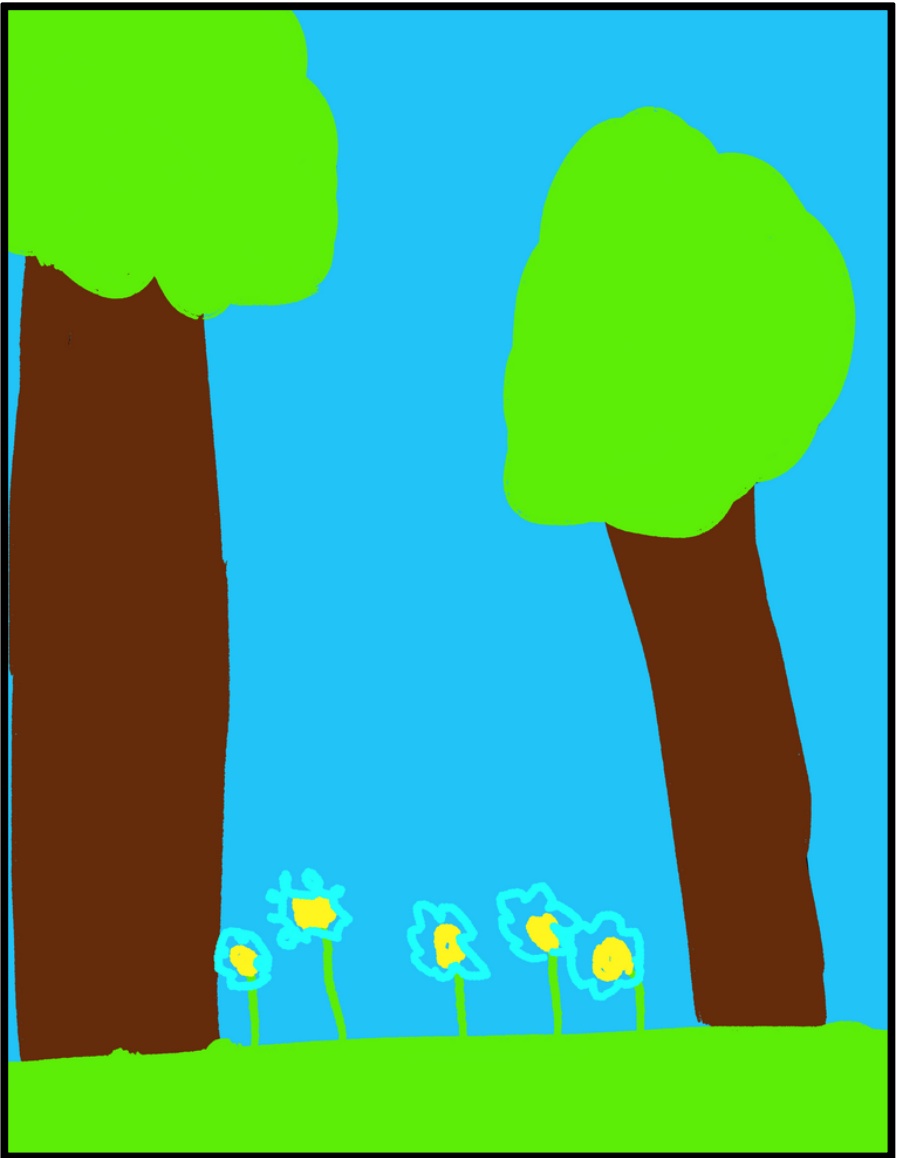


SAVE
WEELAUNEE

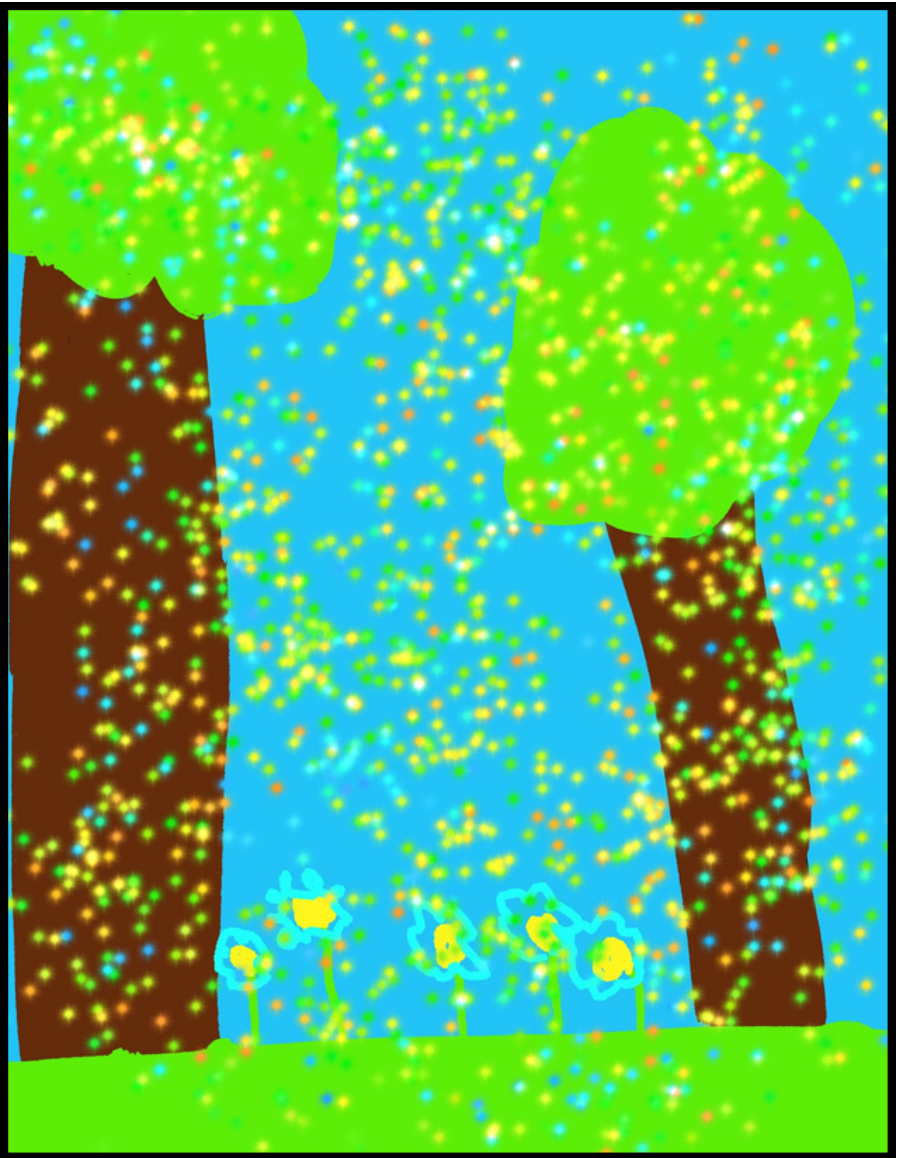
BY
Violet

November 2023

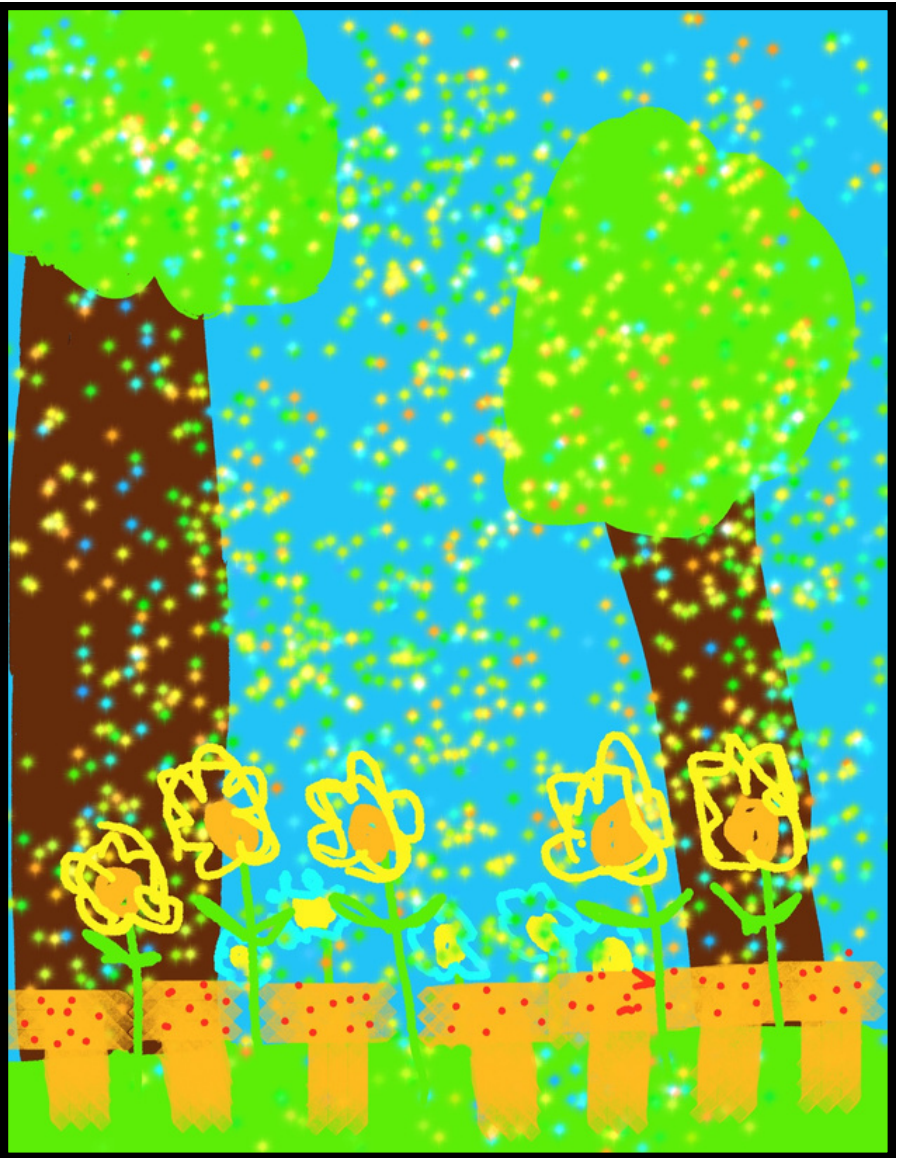
Weelaunee Coalition Press



There is a magical forest.



It has magic swirling all around.



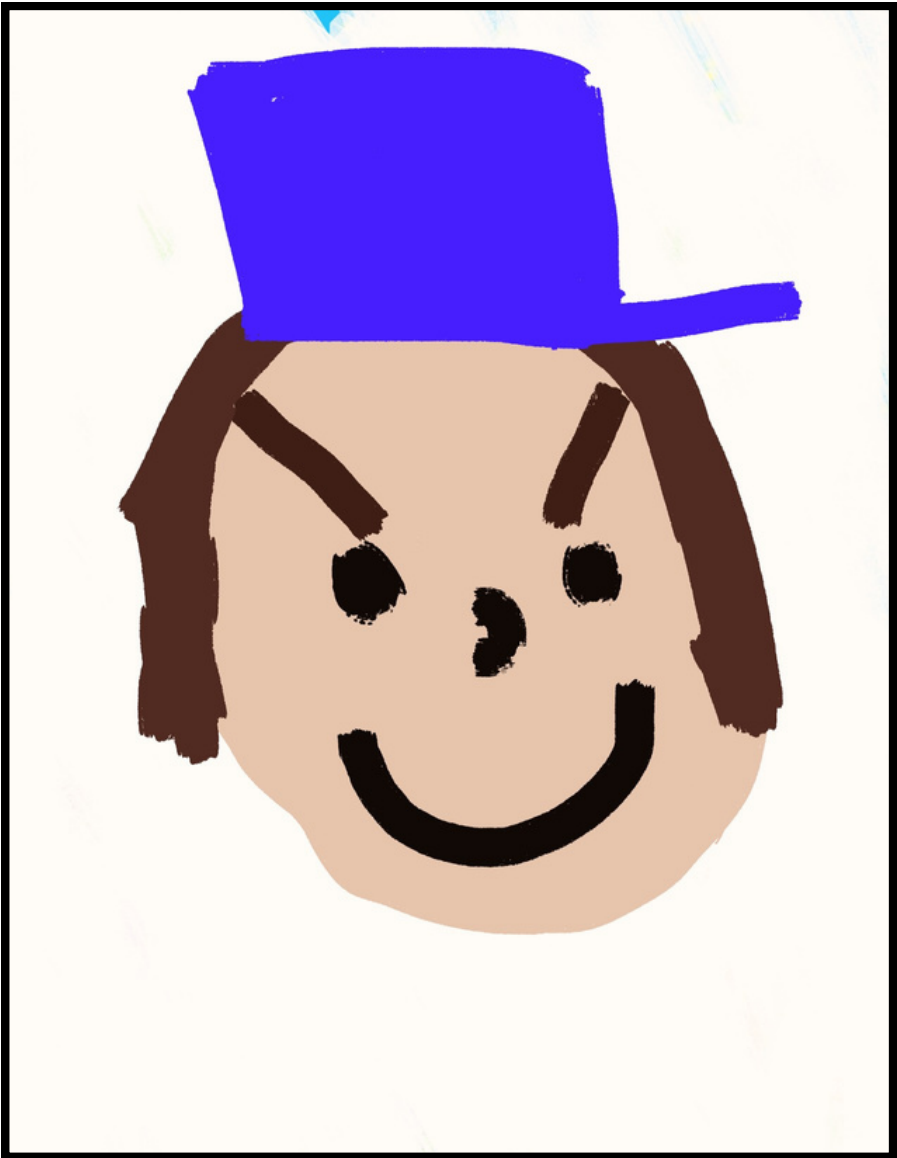
**With plants and mushrooms
to learn about**



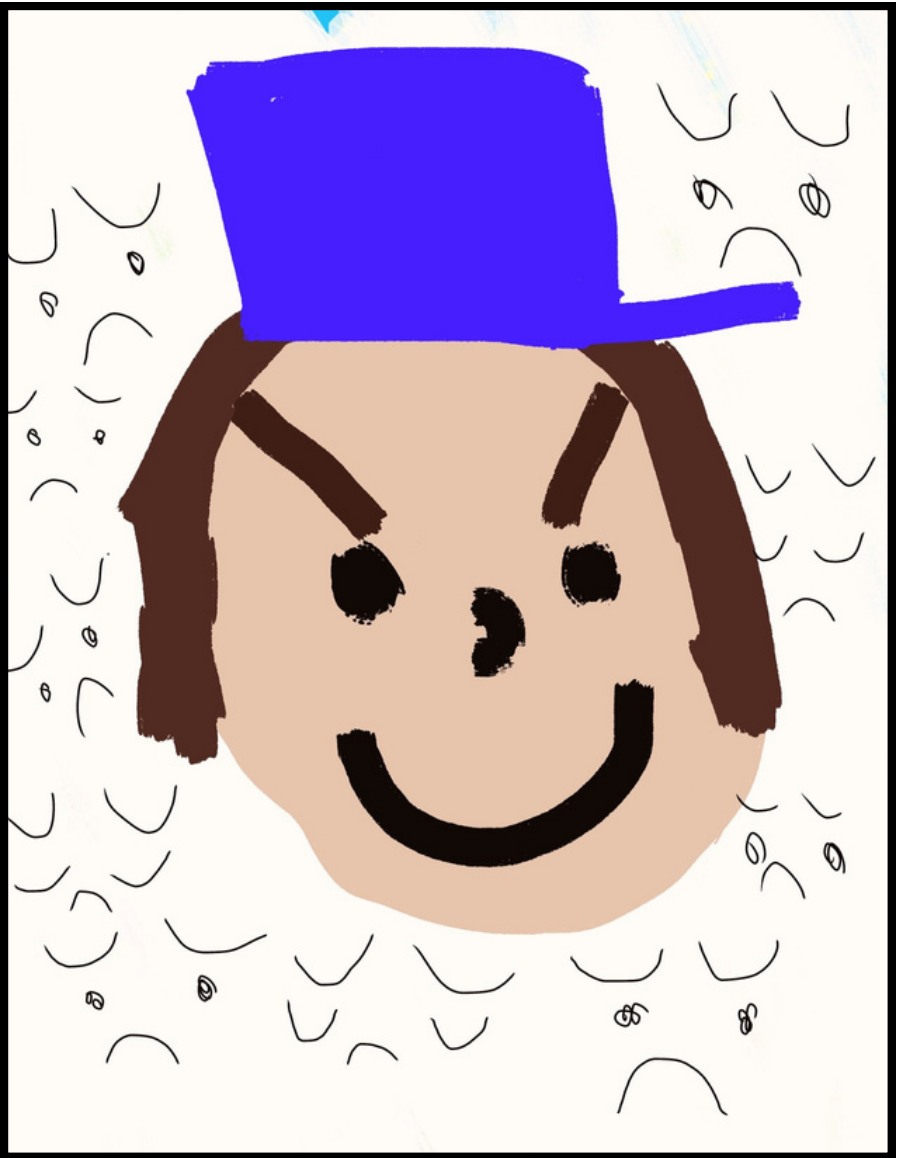
**animals, bugs and
discoveries abound.**



The police don't like this forest.



They want more power.

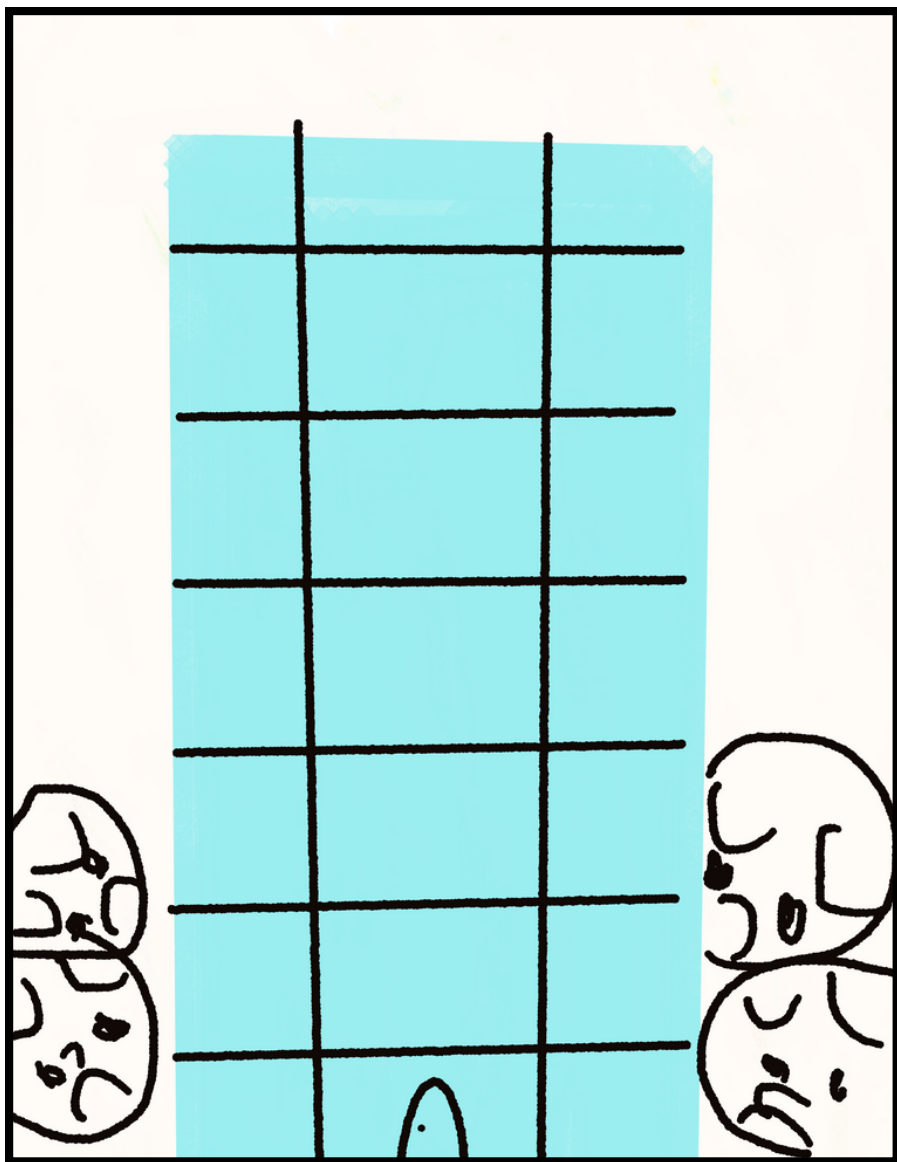


They want to make us cower.

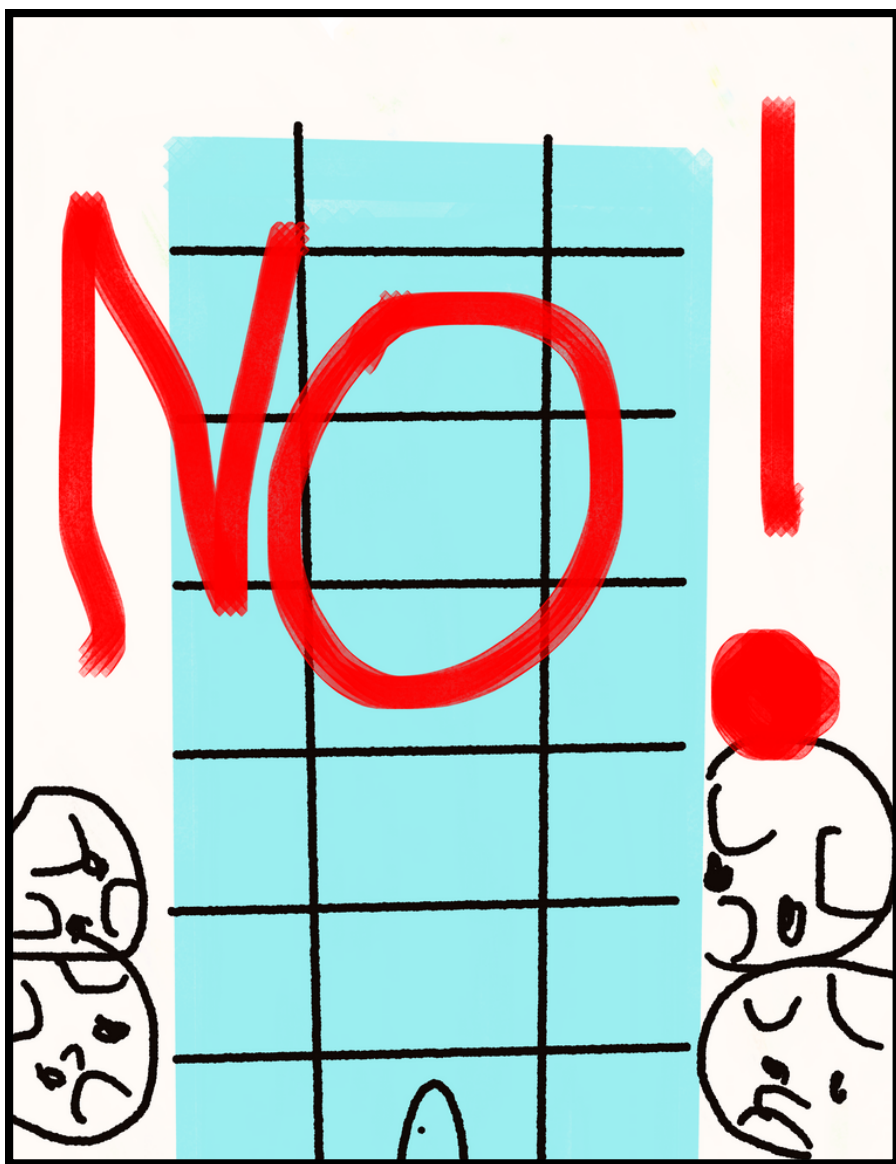


Said no more playing here.

So we can clear,



**the trees and pioneer
a city of fear.**



Friends of the Forest said, NO!



They came in droves.



We gathered, played & planted.



**Some friends even made the
forest their home.**



This made the police angry.



**They attacked the Forest time
and time again.**



**Then a loved one was killed
Manuel "Tortuguita" Paez Teran**



**We occupied, called
in, and marched.**



**Wrote letters and
shouted in the streets.**


Don't Don't
Don't CUT down
the trees!!!



**Don't, don't, don't
cut down the trees!**



Mayor Dickens listen to
what we really need.

Let 
The People
Decide!
Vote to Stop
COP City!
116,000 signatures

**Solidarity and
awareness growing**



more friends coming



and going,
to defend the Atlanta Forest.

No Cop
City here
or
anywhere

**No Cop City here
or anywhere!**



Please save Weelaunee.

STOP
COP
CITY!



Stop Cop City!

A Weelaunee Coalition Press zine

**by Violet Von Hanna, a 7 3/4 year old forest defender
and their mother, Sasha Von Hanna, living on unceded
Muscogee Creek land, known as Atlanta, Georgia.**

- **The South River, called Weelaunee by the Muscogee Creek people, is a headwater to Georgia's largest and most biologically diverse freshwater system. It's one of the most endangered rivers nationwide, because of pollution from Dekalb County and the City of Atlanta. Providing polluted water to millions downstream. There are ongoing investigations of this being a "cancer alley."**
 - **Weelaunee Forest is a habitat for more than 175 species of wildlife, including endangered and near threatened species.**
 - **Atlanta's communities, facing the most poverty, living in the South River watershed have suffered through decades of massive sewage spills, industrial-waste dumping, flooding and a growing presence of carceral institutions. Textbook environmental racism.**
 - **A permanently protected Weelaunee Forest could address long standing social and environmental justice concerns, while dramatically improving community health.**
-

For more info & ways to help:

ATLSolidarity.org

CommunityMovementBuilders.org

CopCityVote.com

DefendTheAtlantaForest.org

SouthRiverGA.org

SouthRiverForest.org

SaveTheOldAtlantaPrisonFarm.org

StopCop.City

StopCopCity.net

StopCopCitySolidarity.org

SRYPaign.org

StoptheSwap.org

Instagram:

@ATLPRESScollective

@CommunityMovementBuilders

@CopCityVote

@DefendAtlantaForest

@IDBLATL

@Mainline_ATL

@SaveWeelaunee

@SouthRiverForest

@SouthRiverGA

@StopCopCity

@StudentsAgainstCopCity